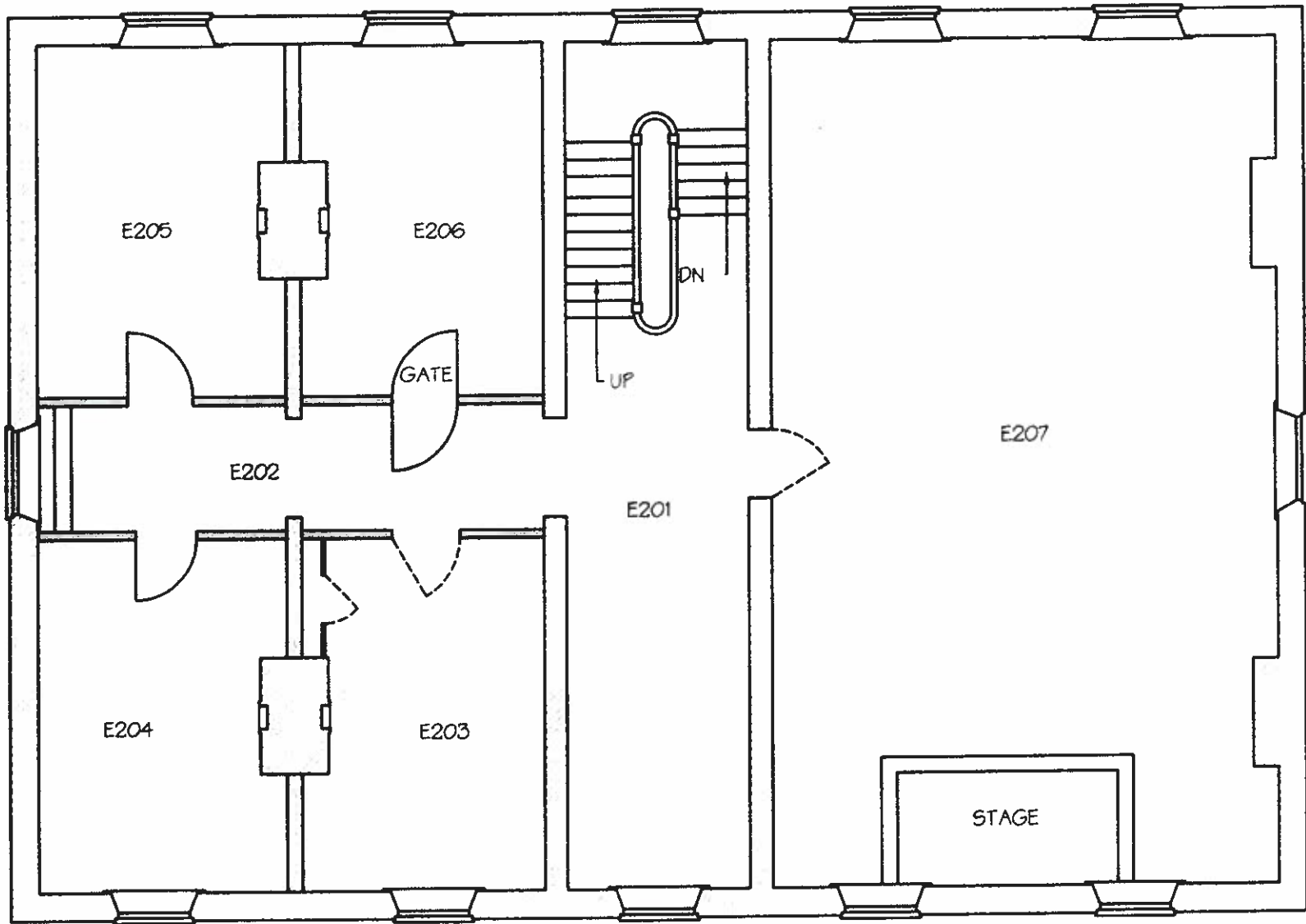


Recorded 2011 By:
ROBERT PARKER ADAMS ARCHITECT

East Wing 1st FLOOR
 Historic Jefferson College
 Circa 1818, Rebuilt 1842
 4 Floors, 12,731 Sq. Ft.

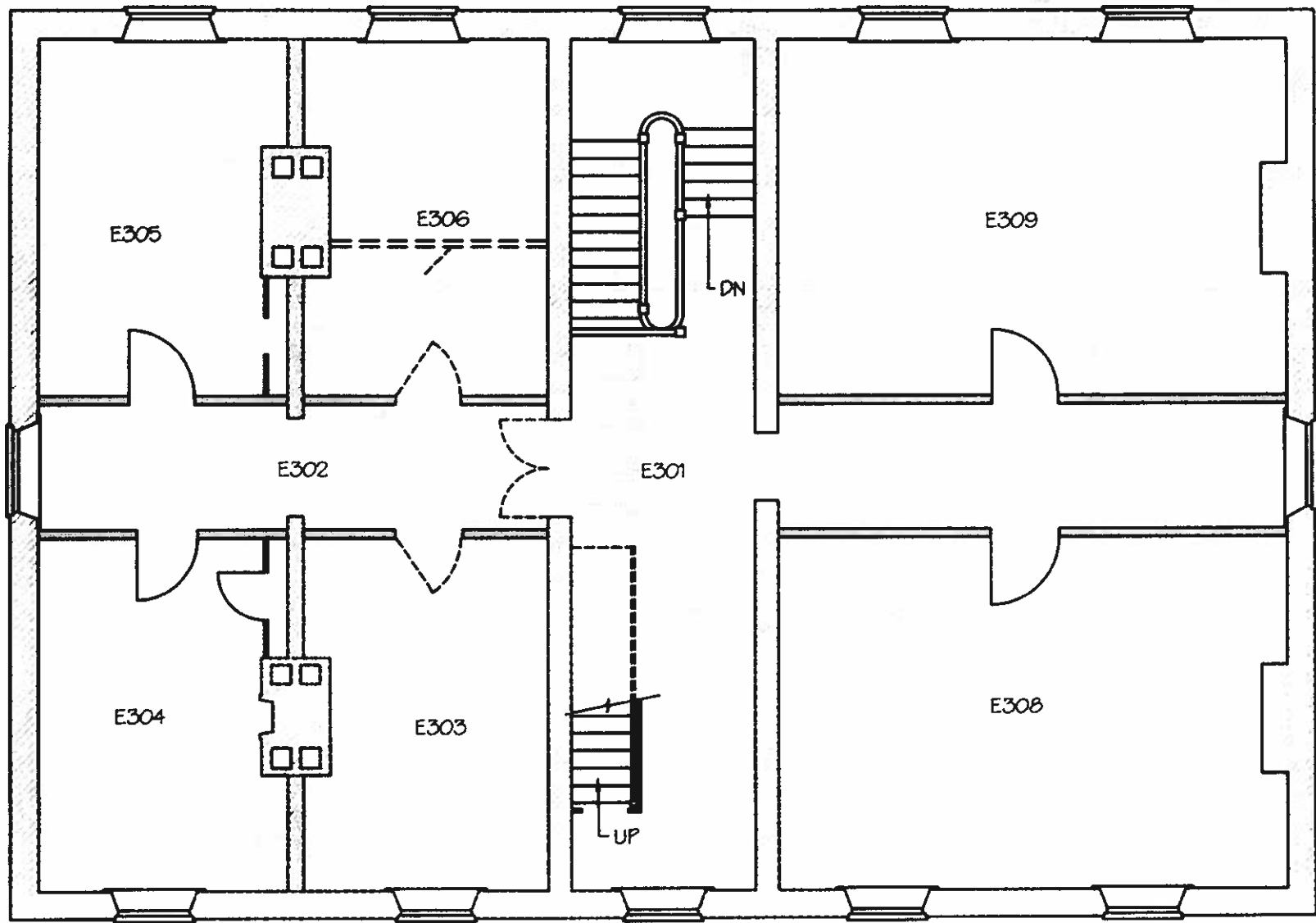


30



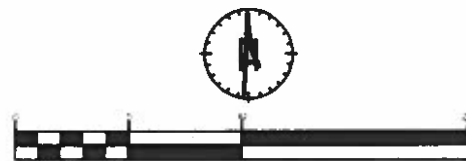
Recorded '011 By:
 ROBERT J. PARKER ADAMS • ARCHITECT

East Wing 2nd FLOOR
 Historic Jefferson College
 Circa 1818, Rebuilt 1842
 4 Floors, 12,731 Sq. Ft.



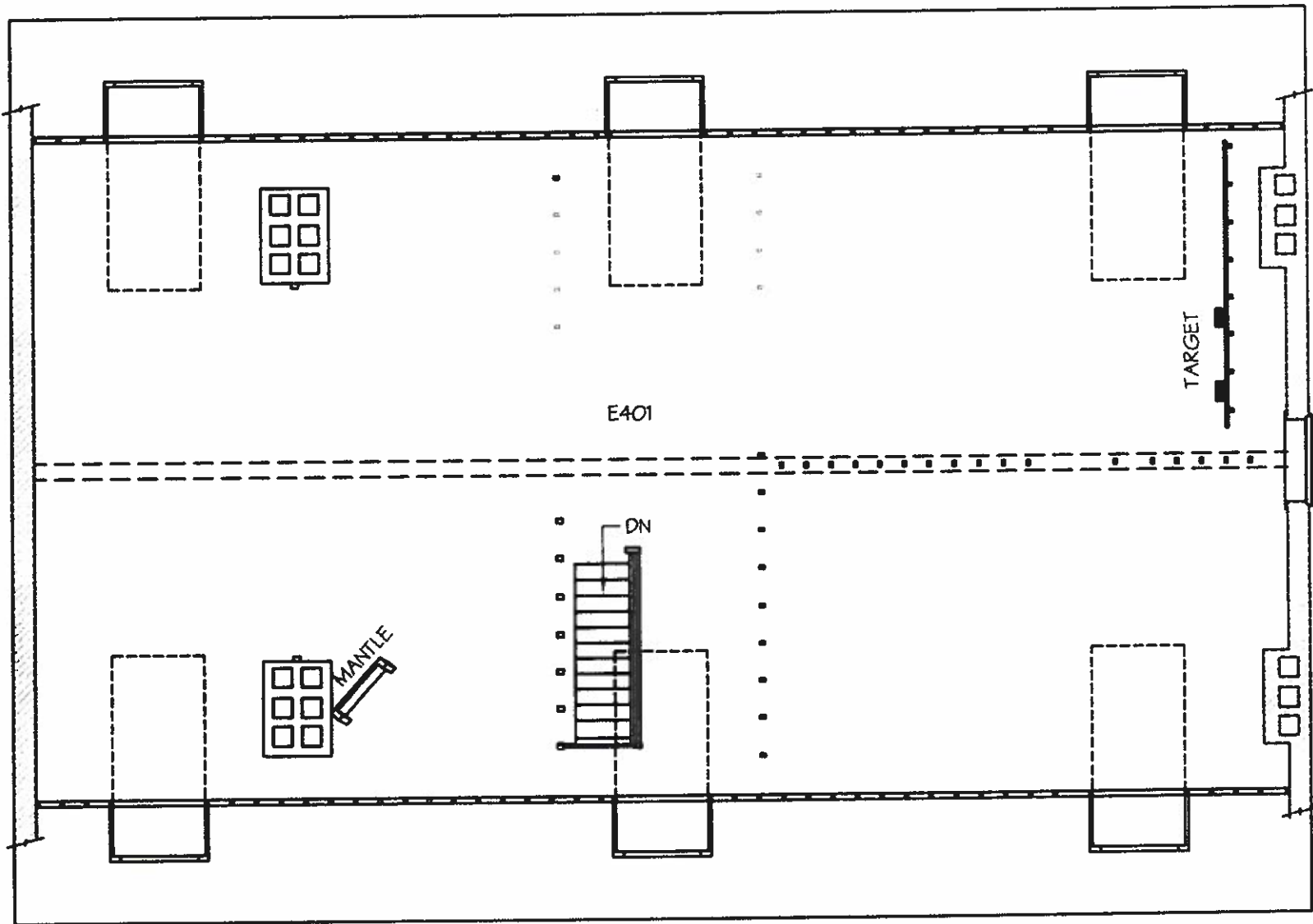
31

Recorded 2011 By:
ROBERT PARKER ADAMS • ARCHITECT

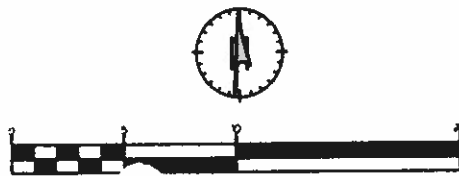


East Wing 3rd FLOOR
 Historic Jefferson College
 Circa 1818, Rebuilt 1842
 4 Floors, 12,731 Sq. Ft.

32



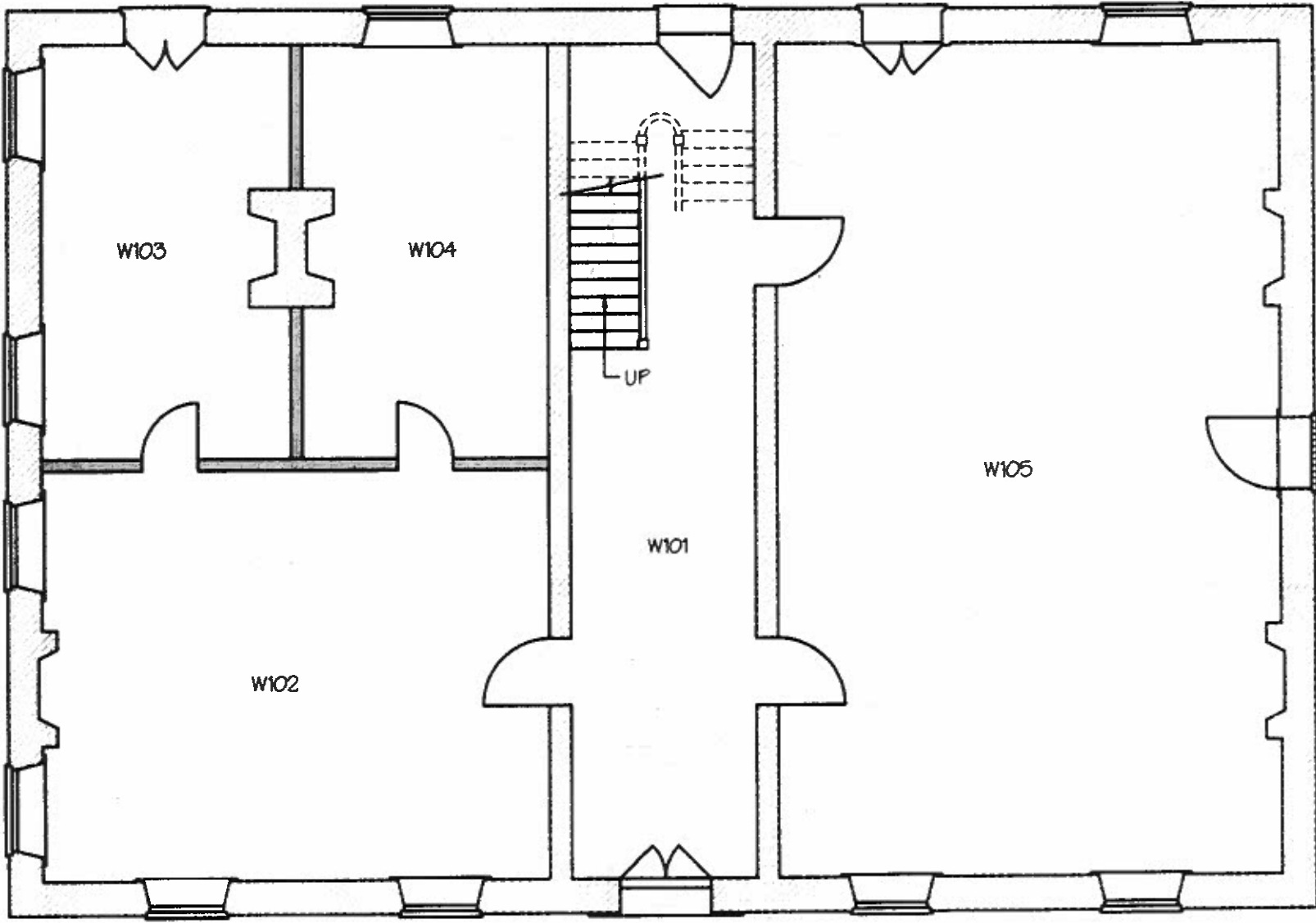
Recorded '011 By:
 ROBL T PARKER ADAMS ARCHITECT



East Wing 4th FLOOR
 Historic Jefferson College
 Circa 1818, Rebuilt 1842
 4 Floors, 12,731 Sq. Ft.

70'-4"

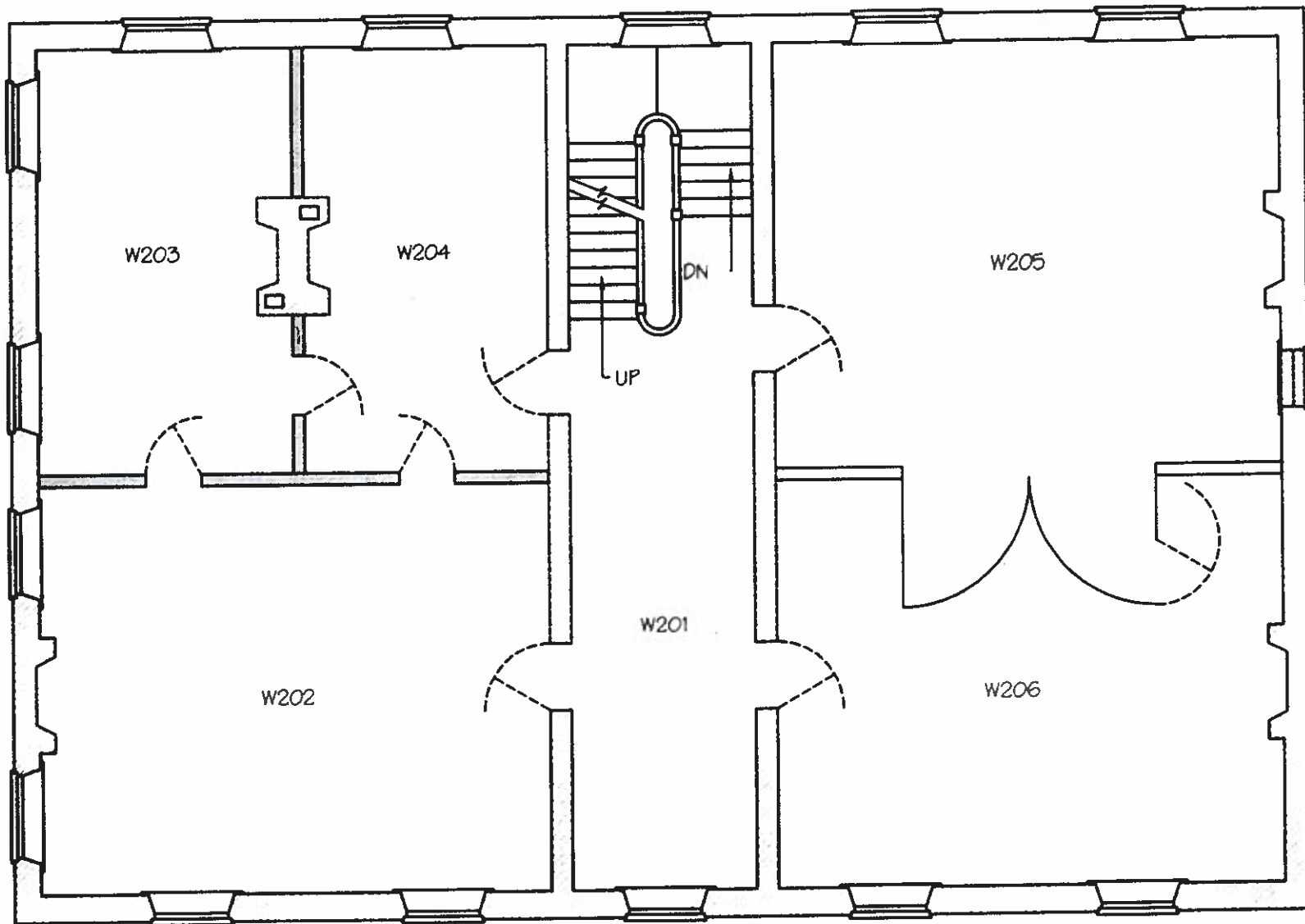
48'-0"
33



Recorded 2011 By:
ROBERT PARKER ADAMS • ARCHITECT



West Wing 1st FLOOR
Historic Jefferson College
Circa 1838
4 Floors, 12,931 Sq. Ft.

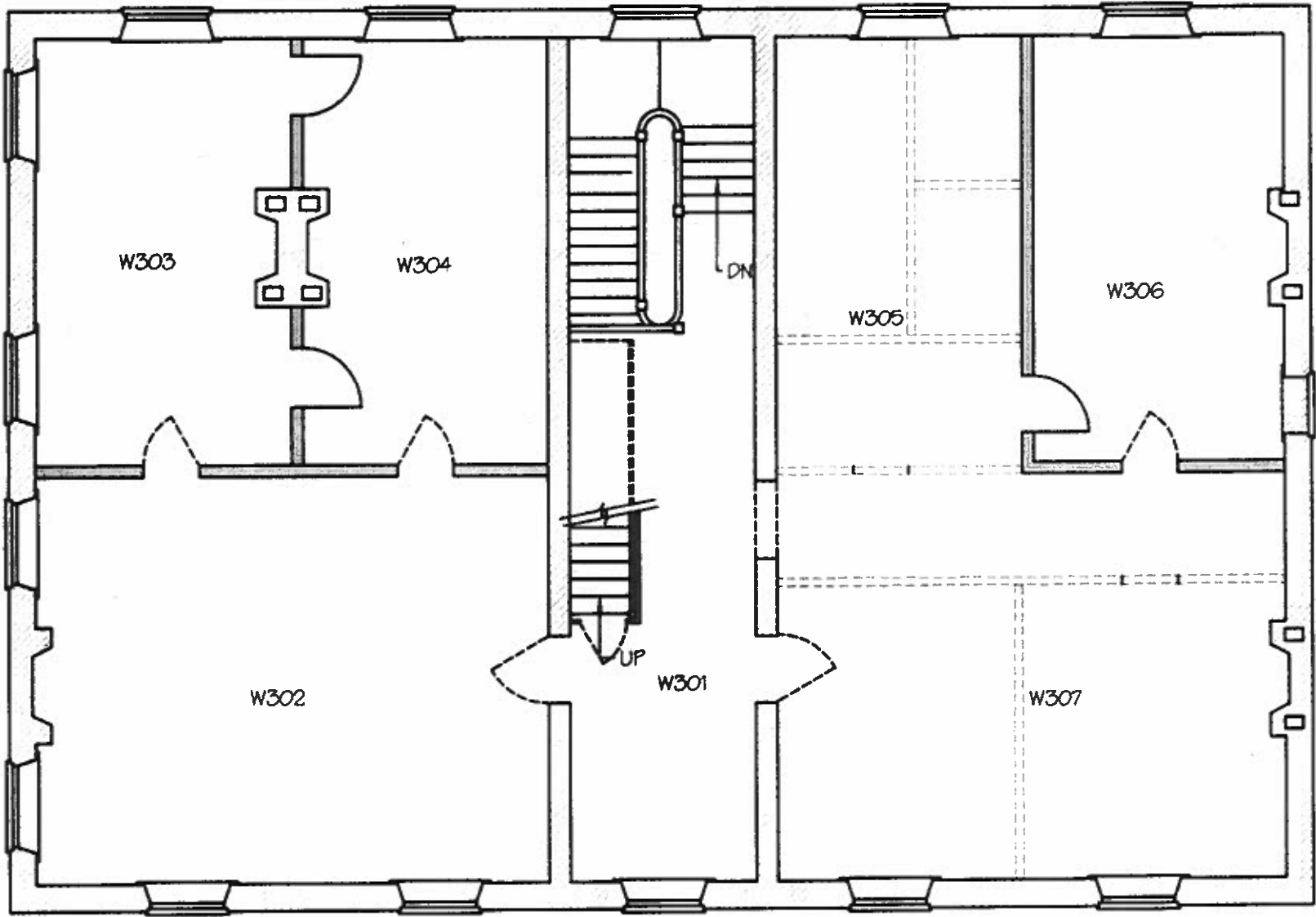


34

Recorded ²⁰¹¹ By:
ROBL J PARKER ADAMS ARCHITECT

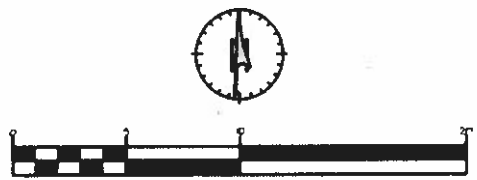


West Wing 2nd FLOOR
 Historic Jefferson College
 Circa 1838
 4 Floors, 12,931 Sq. Ft.



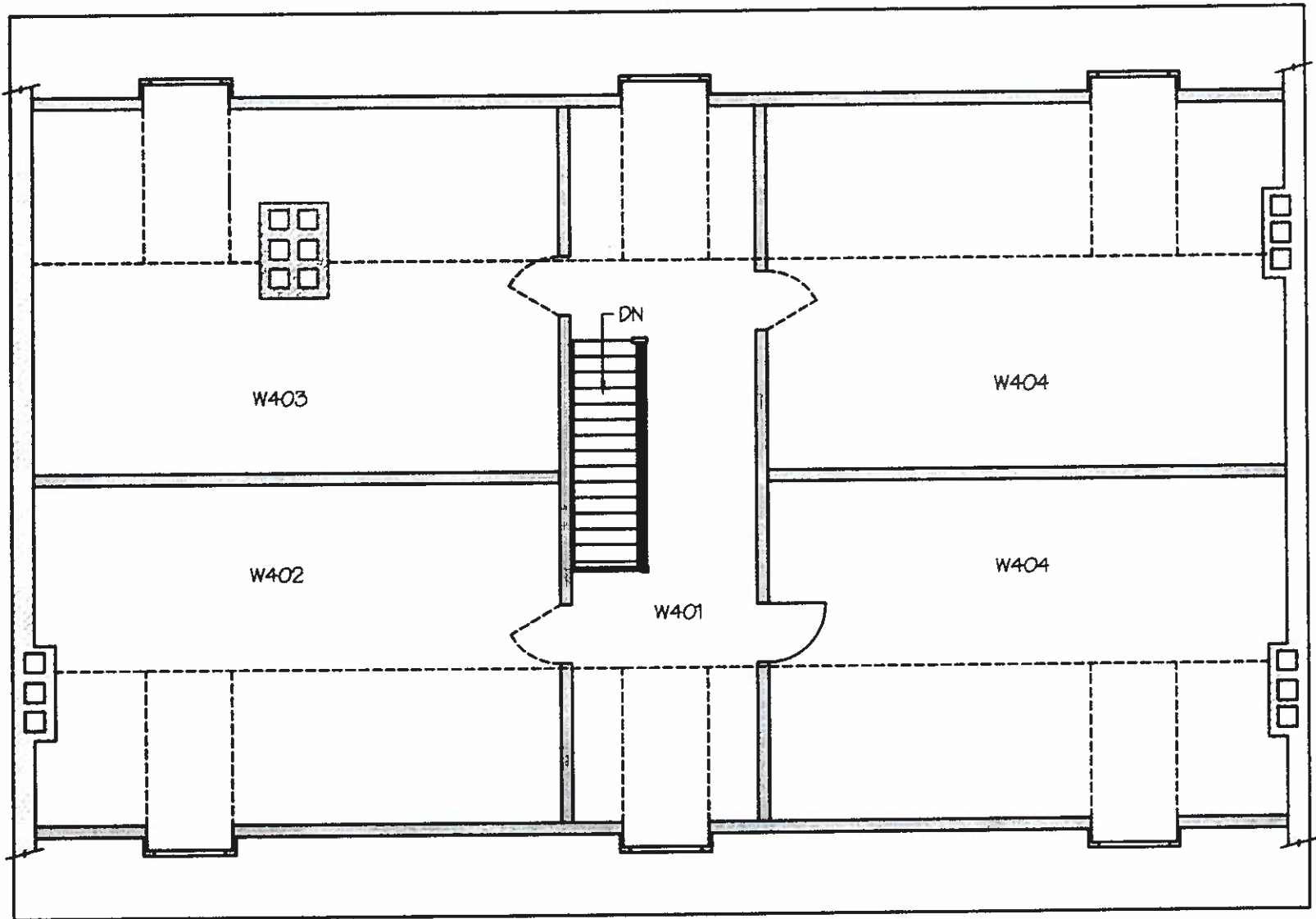
35

Recorded 2011 By:
ROBERT PARKER ADAMS • ARCHITECT



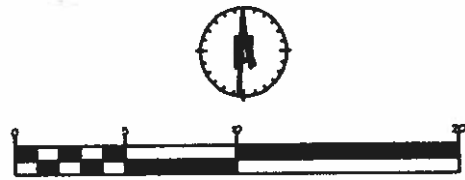
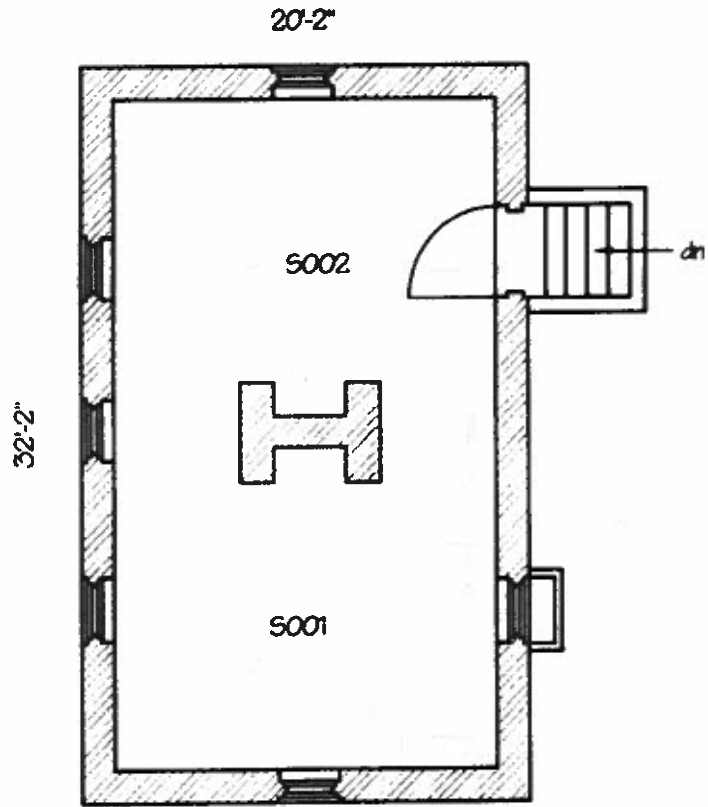
West Wing 3rd FLOOR
 Historic Jefferson College
 Circa 1838
 4 Floors, 12,931 Sq. Ft.

36



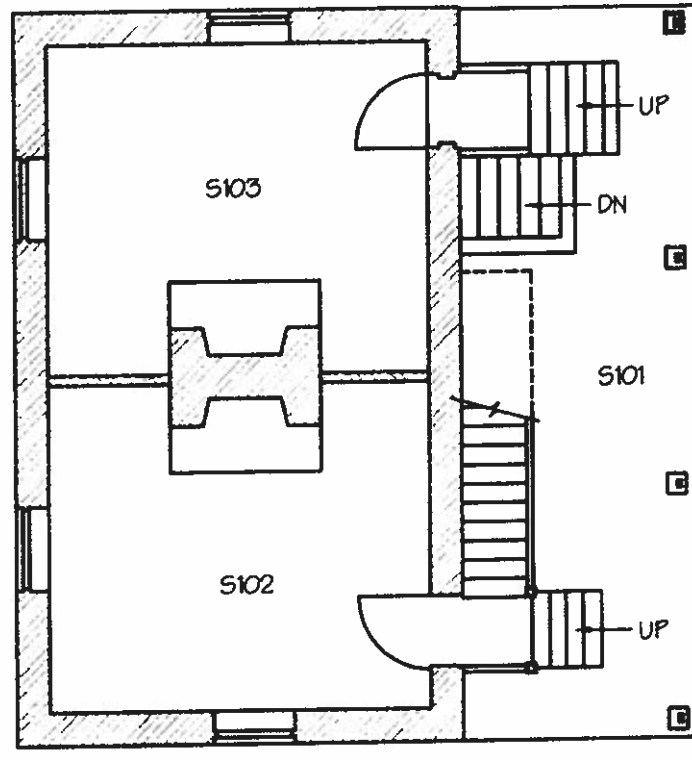
Recorded '011 By:
 ROBL T PARKER ADAMS • ARCHITECT

West Wing 4th FLOOR
 Historic Jefferson College
 Circa 1838
 4 Floors, 12,931 Sq. Ft.



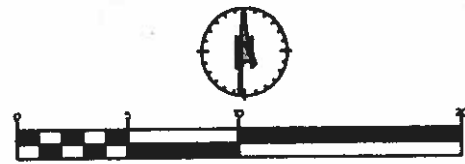
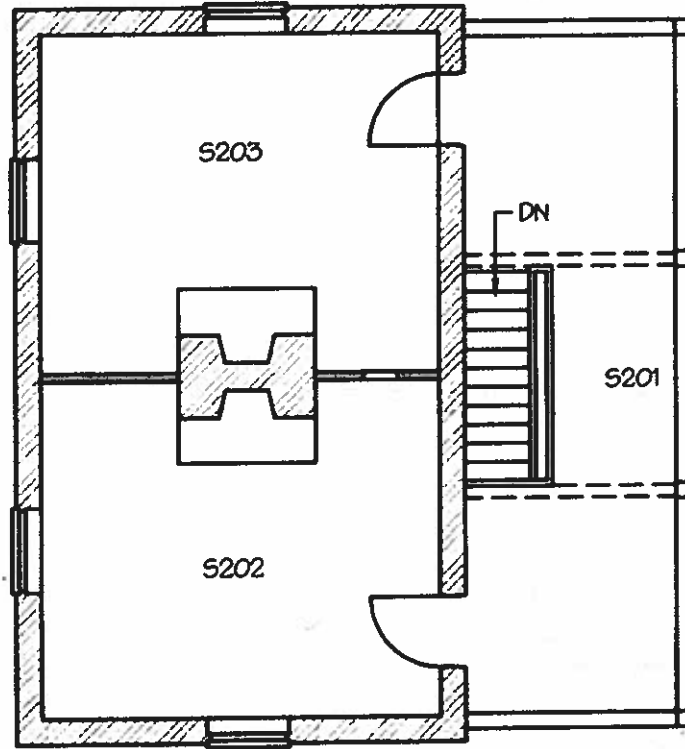
Recorded 2011 By:
ROBERT PARKER ADAMS • ARCHITECT

Steward's Building BASEMENT
 Historic Jefferson College
 Circa 1838
 3 Floors, 1,947 Sq. Ft.



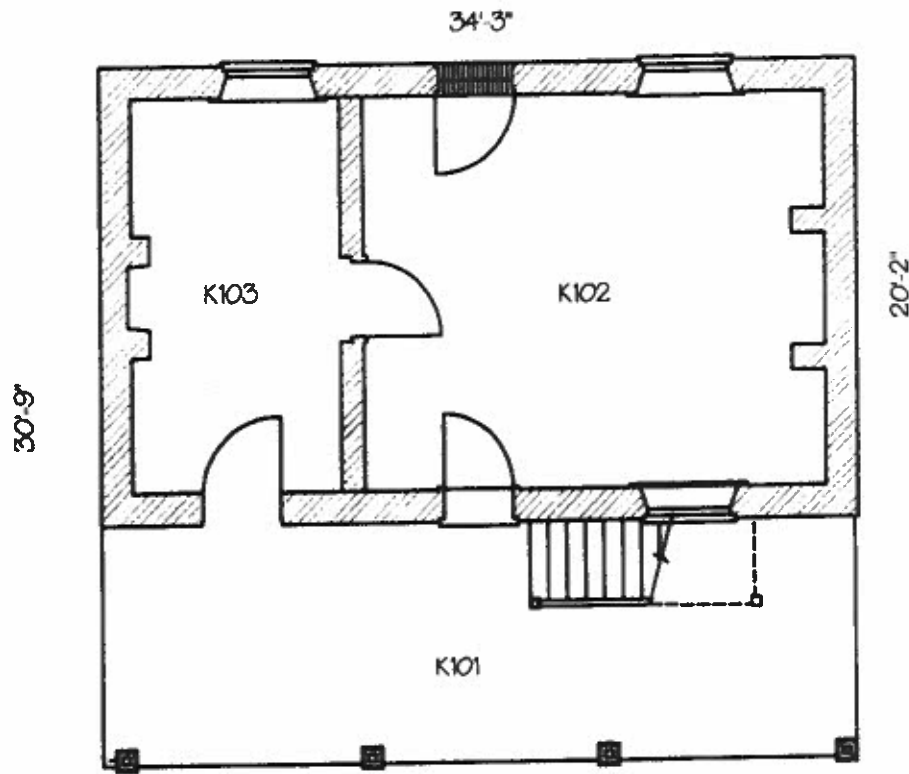
Recorded 2011 By:
 ROBERT PARKER ADAMS • ARCHITECT

Steward's Building 1ST FLOOR
 Historic Jefferson College
 Circa 1898
 3 Floors, 1,947 Sq. Ft.

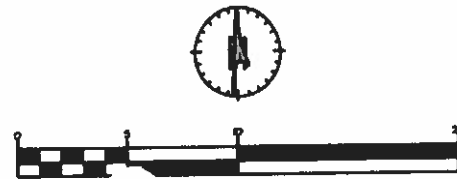


Recorded 2011 By:
ROBERT PARKER ADAMS ARCHITECT

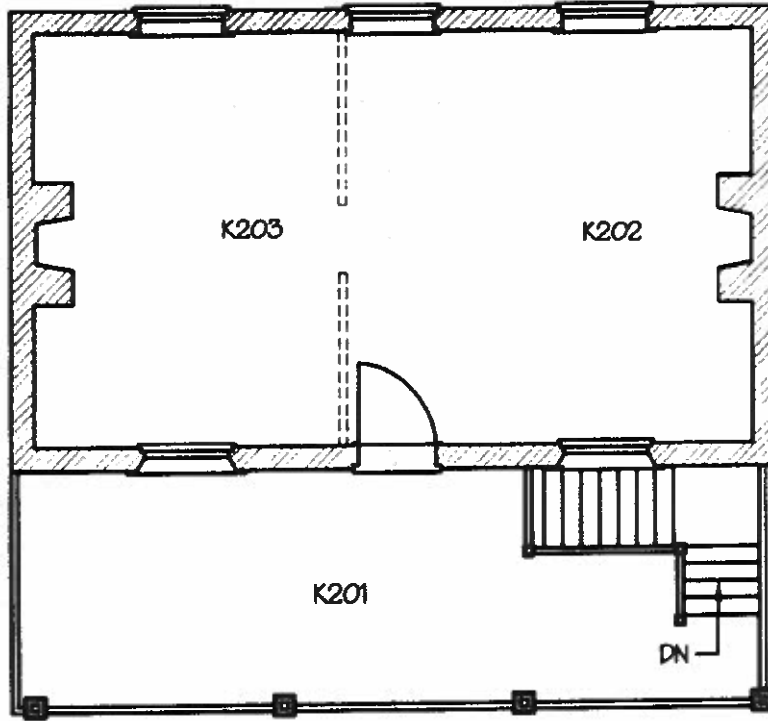
Steward's Building 2ND FLOOR
Historic Jefferson College
Circa 1898
3 Floors, 1,947 Sq. Ft.



Recorded 2011 By:
 ROBERT PARKER ADAMS ARCHITECT

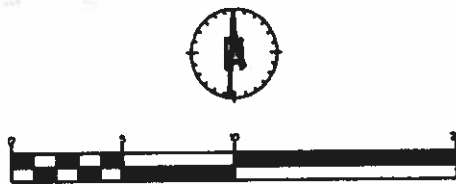


East Kitchen 1ST FLOOR
 Historic Jefferson College
 Circa 1839
 2 Floors, 1,384 Sq. Ft.

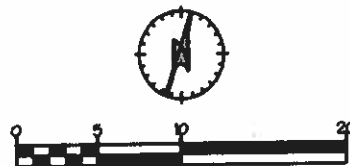
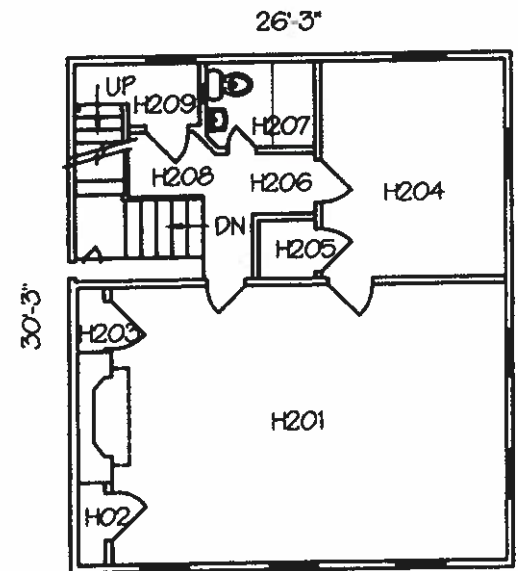
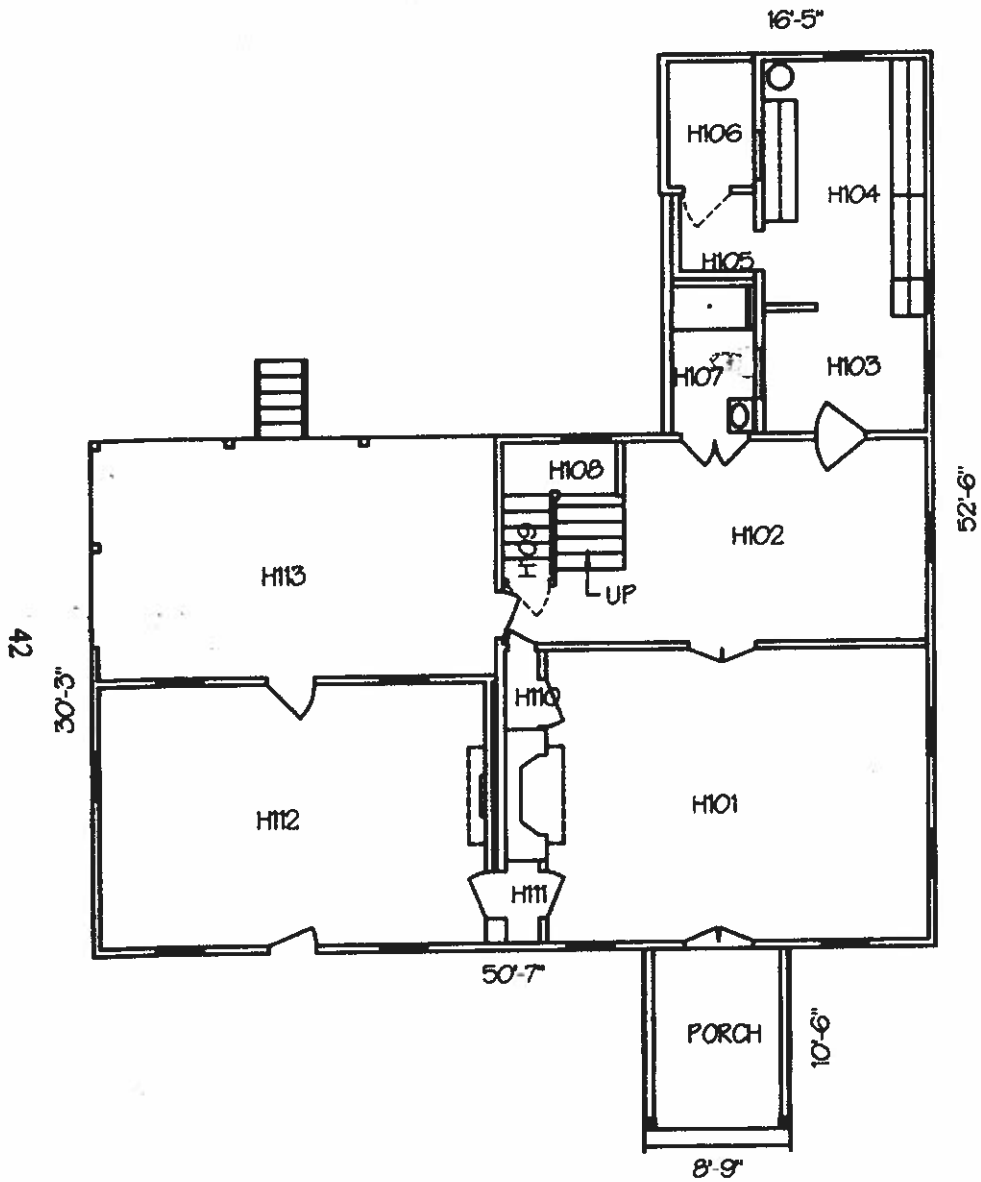


41

Recorded 2011 by:
ROBERT PARKER ADAMS ARCHITECT

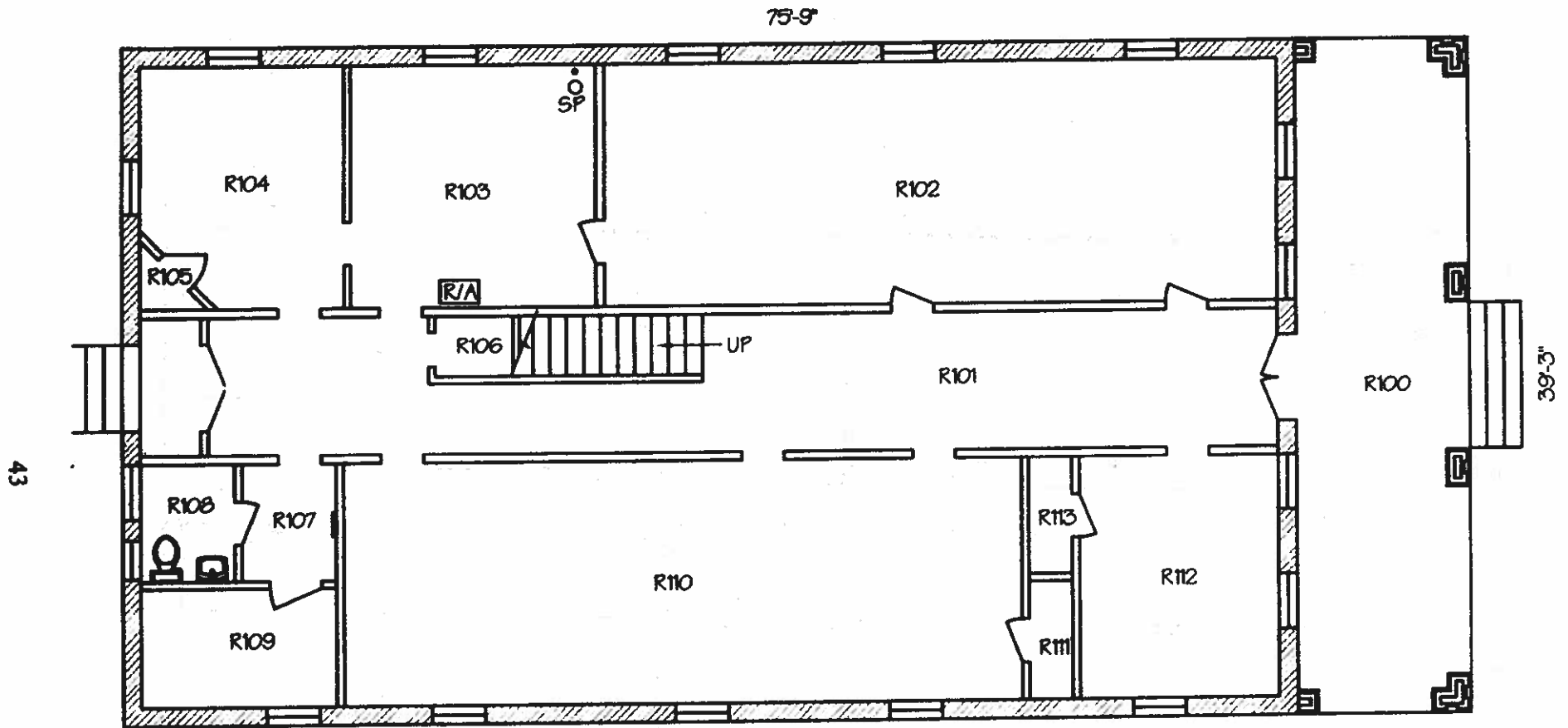


East Kitchen 2ND FLOOR
Historic Jefferson College
Circa 1890
2 Floors, 1,384 Sq. Ft.



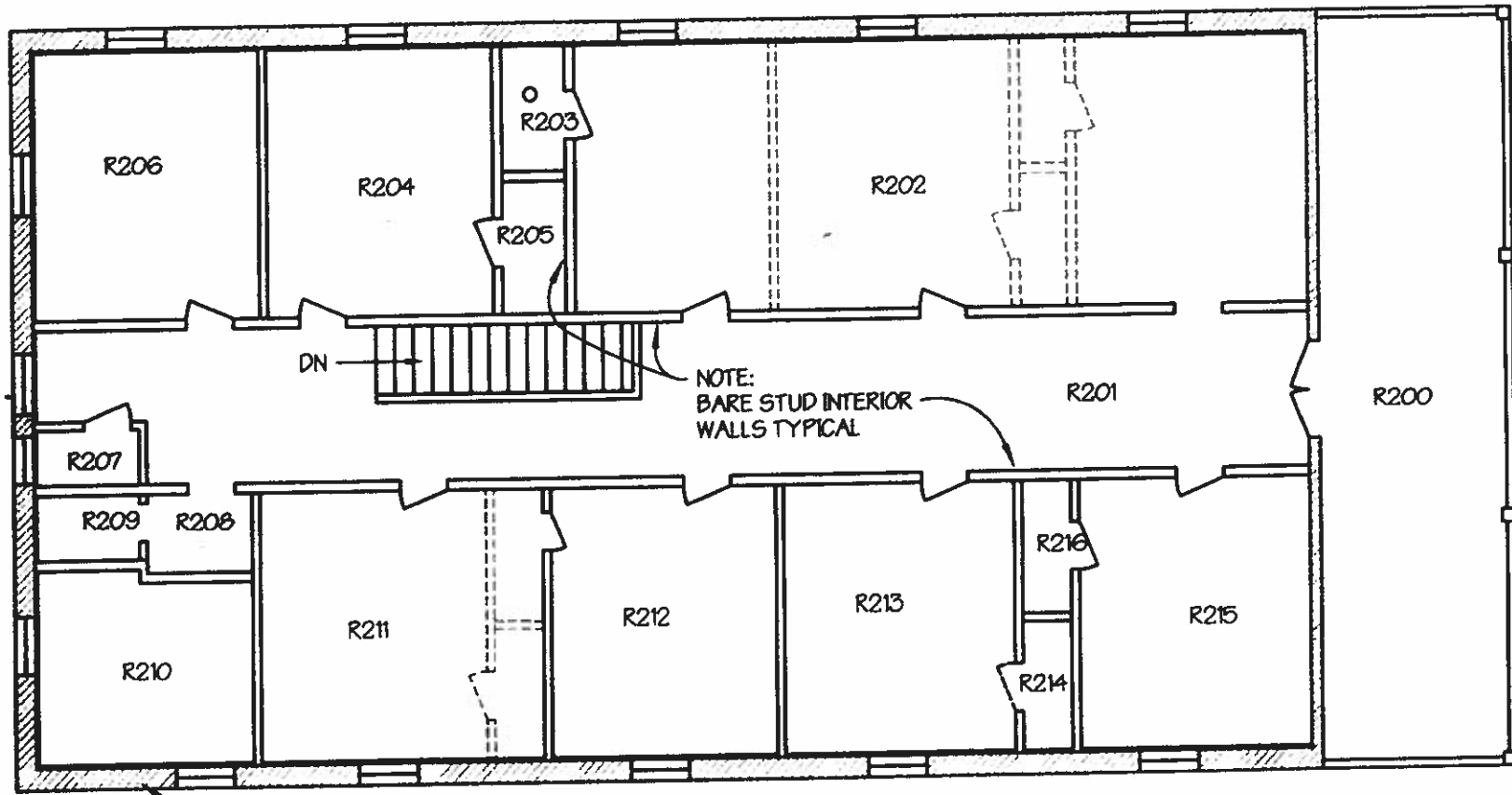
Recorded 2011 By:
 ROE T PARKER ADAMS ARCHITECT

President's House
 Historic Jefferson College
 Circa 1830, Acquired 1842
 2 Floors, 2,342 Sq. Ft.



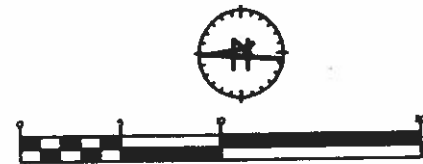
Recorded 2011 By:
ROBERT PARKER ADAMS • ARCHITECT

Raymond Hall 1ST FLOOR
 Historic Jefferson College
 Circa 1915, Rebuilt 1947
 2 Floors, 5,442 Sq. Ft.



NOTE:
BARE STUD INTERIOR
WALLS TYPICAL

ALL WALLS BRICK W/ 2x2 FURRING (NO FINISH)

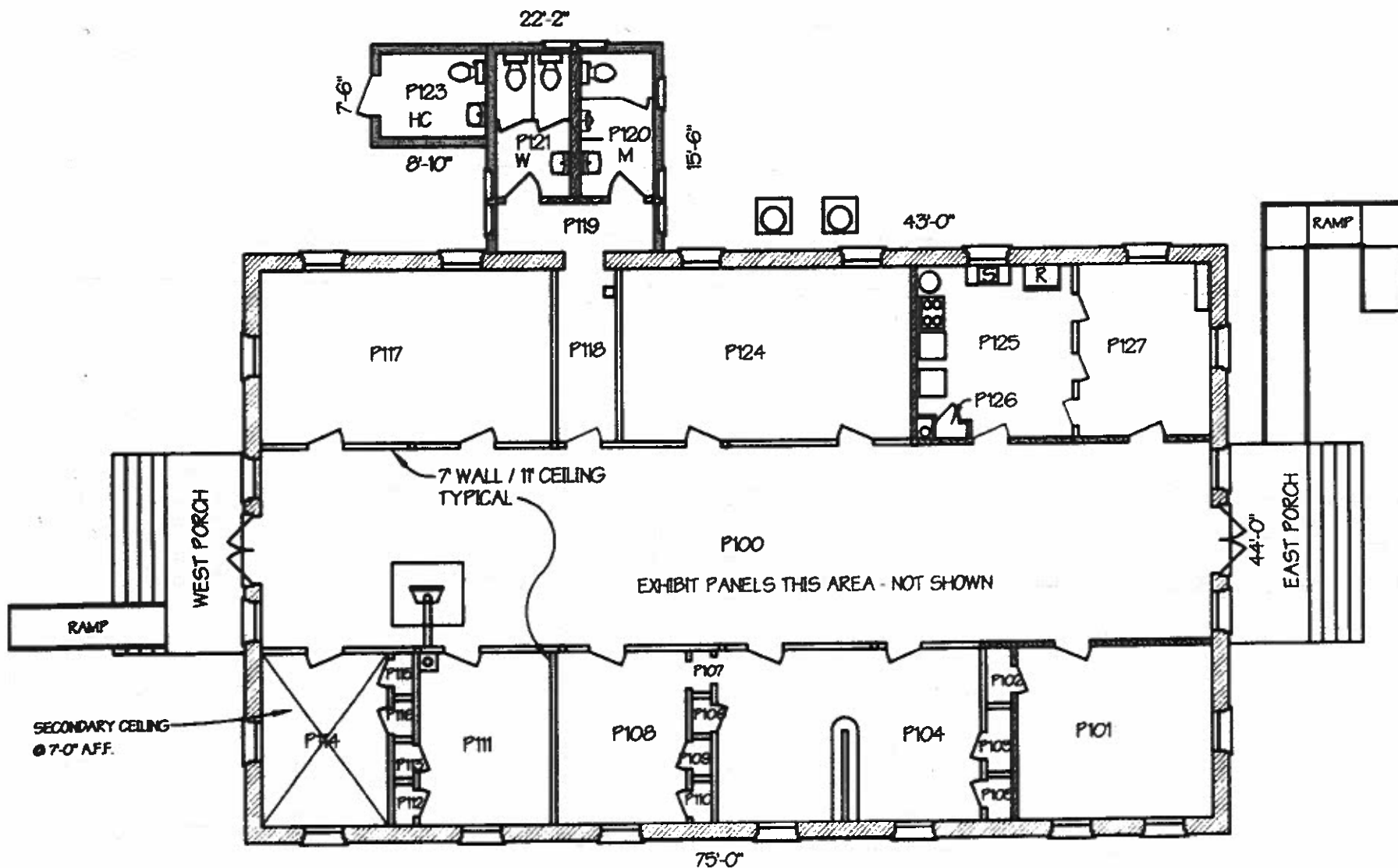


Raymond Hall 2ND FLOOR
 Historic Jefferson College
 Circa 1915, Rebuilt 1947
 2 Floors, 5,442 Sq. Ft.

Recorded 2011 By:
 ROBERT PARKER ADAMS ARCHITECT

44

45



-  MASONRY
-  FULL HEIGHT WOOD
-  PARTITION WALL TO 7'-0" A.F.F.



Prosper Hall
 Historic Jefferson College
 Circa 1932
 1 Floor, 3,581 Sq. Ft.

Recorded 2011 By:
ROBERT PARKER ADAMS ARCHITECT

101'-6"

WALK

PORCH

DS

C109

C107

C202

C203

C302

C303

C409

C407

C104 C110

C404 C410

C103

C108

C102

C101

C207

C208

C200

C204

C201

C205

C206

C300

C307

C308

C301

C304

C305

C306

C301

C403

C400

C406

C401

C408

C402

37'-6"

46

PLAQUE

WALK

Carpenter Hall

Historic Jefferson College

Circa 1937

1 Floor, 3,804 Sq. Ft.



Recorded 2011 By:
ROB T PARKER ADAMS ARCHITECT